

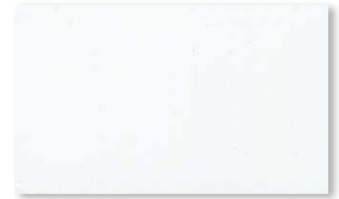
TIGER Drylac 49/10410  
**High-Reflective White** 90+



TIGER Drylac 39/10210  
**Apollo White** 90±5



TIGER Drylac 49/11421  
**WW White** 85±5



TIGER Drylac 49/11111  
**Bengal White** 95±5



TIGER Drylac 39/10040  
**White Semi Matte** 40±5



TIGER Drylac 49/11350  
**White Matte** 20±5



TIGER Drylac 49/10103  
**White Matte RAL 9010** 20±5



TIGER Drylac 49/13150  
**White Fine Texture**



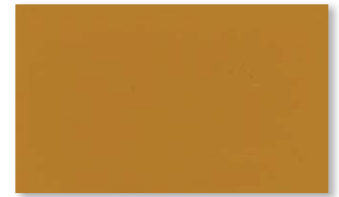
TIGER Drylac 68/20057  
**Deer Yellow** 85±5



TIGER Drylac 39/20130  
**Buttercup Yellow** 85±5



TIGER Drylac 49/20047  
**Steel Rack Yellow** 90±5 ■



TIGER Drylac 59/20360  
**New Cat Yellow** 80±5



TIGER Drylac 39/60060  
**Roman Bronze Matte** 20±5



TIGER Drylac 49/62070  
**Rail Bronze Matte** 60±5



TIGER Drylac 39/60010  
**Chocolate Brown** 80±5



TIGER Drylac 49/62721  
**Brown Fine Texture**



TIGER Drylac 49/44444  
**Bengal Blue** 95±5



TIGER Drylac 39/40010  
**Royal Blue** 85±5



TIGER Drylac 68/51548  
**Deer Green** 85±5



TIGER Drylac 59/50412  
**Fence Green** 85±5



TIGER Drylac 49/70239  
**Fed. Std. Haze Gray OGF** 40±5



TIGER Drylac 49/70158  
**Bengal Dark Grey** 95±5



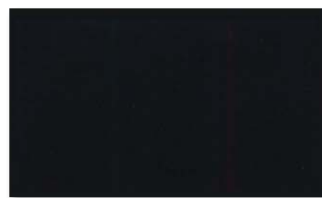
TIGER Drylac 39/70200  
**ASA-49** 80±5



TIGER Drylac 49/88888  
**Bengal Black** 95±5



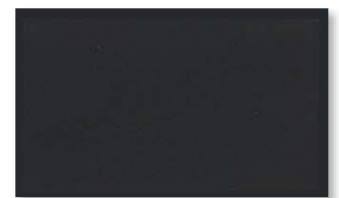
TIGER Drylac 49/80350  
**Black Matte RAL 9005** 20±7



TIGER Drylac 39/80020  
**Black Matte** 20±5



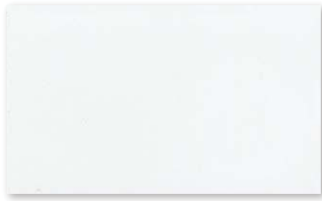
TIGER Drylac 44/80060  
**Solar Black Flat Matte** 6±3



TIGER Drylac 69/80331  
**Black Flat Matte Interior** 4±2 ◆

\*Gloss level according to Gardner 60° ASTM D523.

Paper and ink limitations of color samples as well as influence from heat and light account for differences from actual powder coatings.



TIGER Drylac 39/10160  
**Horizon White** 90±5



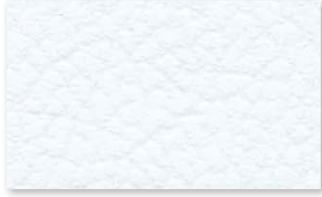
TIGER Drylac 49/10870  
**White OGF** 70±5



TIGER Drylac 39/10150  
**Western White** 90±5



TIGER Drylac 49/13721  
**Blanco** 90±5



TIGER Drylac 49/11570  
**RTG Nature White**



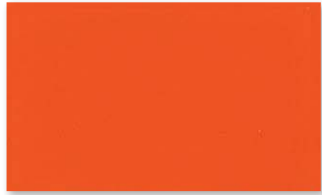
TIGER Drylac 49/16130  
**Light Ivory OGF** 80±5



TIGER Drylac 39/15010  
**Beige** 90±5



TIGER Drylac 49/10388  
**Bengal Cream** 95±5



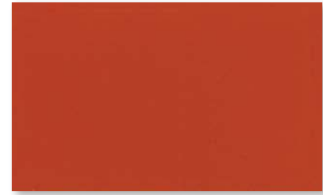
TIGER Drylac 49/22222  
**Bengal Orange** 95±5



TIGER Drylac 39/20010  
**Safety Orange** 90±5



TIGER Drylac 39/32920  
**Pumpkin Orange** 90±5



TIGER Drylac 49/25001  
**Steel Rack Orange** 90±5 ■



TIGER Drylac 39/60020  
**Bronze Matte Metallic**



TIGER Drylac 39/90000  
**Silver 1-coat**



TIGER Drylac 49/91312  
**Chrome OGF** ▲



TIGER Drylac 49/99999  
**Bengal Silver 1 coat**



TIGER Drylac 39/50060  
**U.S. Green** 90±5



TIGER Drylac 49/55555  
**Bengal Green** 95±5



TIGER Drylac 49/51610  
**Moss Green OGF** 80±5



TIGER Drylac 16/50012  
**Olive Drab FS 595-34079** 4±2



TIGER Drylac 49/80036  
**Wet Black** 95±5



TIGER Drylac 49/80070  
**Truck Black** 95±5



TIGER Drylac 39/80010  
**Gloss Black** 85±5



TIGER Drylac 49/80033  
**PacCar Black Semigloss** 55±5



TIGER Drylac 44/90053  
**Millennium Black Flat Matte** 8±3



TIGER Drylac 44/80066  
**Black Magic Flat Matte** 6±3



TIGER Drylac 39/80200  
**Black Fine Texture**



TIGER Drylac 49/80830  
**Black Matte Fine Texture**

\*Gloss level according to Gardner 60° ASTM D523.

Paper and ink limitations of color samples as well as influence from heat and light account for differences from actual powder coatings.



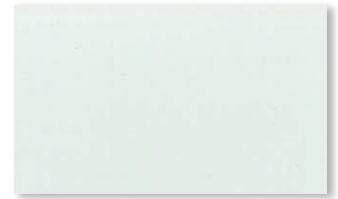
TIGER Drylac 39/10010  
**Sky White** 90±5



TIGER Drylac 49/13370  
**Off White** 60±5



TIGER Drylac 44/10008  
**Anti-Graffiti White** 90±5



TIGER Drylac 49/10316  
**Steel Rack White** 90±5



TIGER Drylac 39/15020  
**Almond** 90±5



TIGER Drylac 49/19365  
**Tan** 85±5



TIGER Drylac 16/15013  
**Desert Tan FS 595-30318** 4±2



TIGER Drylac 39/20020  
**Safety Yellow** 90±5



TIGER Drylac 49/30052  
**Steel Rack Red** 90±5 ■



TIGER Drylac 49/33333  
**Bengal Red** 90±5



TIGER Drylac 39/30100  
**Fire Engine Red** 85±5



TIGER Drylac 68/30019  
**Harvest Red** 85±5



TIGER Drylac 59/90820  
**Antique Silver Metallic**



TIGER Drylac 59/90821  
**Antique Copper Metallic**



TIGER Drylac 59/90050  
**Antique Bronze Metallic**



TIGER Drylac 39/30070  
**Snowmobile Purple** 90±5



TIGER Drylac 39/70010  
**ASA-70** 85±5



TIGER Drylac 49/71800  
**Haze Gray OGF** 75±5



TIGER Drylac 39/70020  
**ASA-61** 80±5



TIGER Drylac 49/77777  
**Bengal Light Grey** 95±5



TIGER Drylac 44/90051  
**Millennium Black Semigloss** 60±5



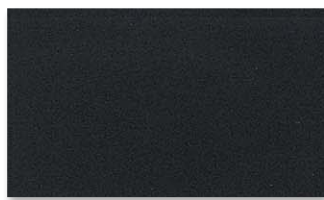
TIGER Drylac 49/80720  
**Black OGF** 70±5



TIGER Drylac 39/80040  
**Black Semigloss** 60±5



TIGER Drylac 49/81430  
**Black Semi Matte** 40±5



TIGER Drylac 49/81241  
**Black Extra Fine Texture**



TIGER Drylac 69/80143  
**Midnight Black Epoxy Wrinkle**



TIGER Drylac 39/80170  
**Black Wrinkle**



TIGER Drylac 49/80521  
**Anti-Skid Black**

\*Gloss level according to Gardner 60° ASTM D523.

Paper and ink limitations of color samples as well as influence from heat and light account for differences from actual powder coatings.

# essentials

## Clear

## Primer



TIGER Drylac 39/10200  
**Appliance White** 90±5



TIGER Drylac 49/66666  
**Bengal Yellow** 95±5



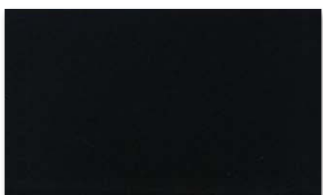
TIGER Drylac 39/30010  
**Ruby Red** 90±5



TIGER Drylac 59/40653  
**Mercury Blue** 85±5



TIGER Drylac 49/70082  
**ASA-61 Semigloss** 60±5



TIGER Drylac 44/90052  
**Millennium Black Matte** 35±7



TIGER Drylac 49/80990  
**RTG RAL 9011**



TIGER Drylac 38/00001  
**Clear Glossy**



TIGER Drylac 49/00530  
**Clear Glossy**



TIGER Drylac 49/01234  
**Bengal Clear Glossy**



TIGER Drylac 44/00018  
**Anti-Graffiti Clear Glossy**



TIGER Drylac 49/00280  
**Clear Semigloss**



TIGER Drylac 38/00088  
**Clear Matte Super Durable**



TIGER Drylac 16/00030  
**Clear Flat Matte**



TIGER Drylac 09/73841  
**OGF Primer** 70±5



TIGER Drylac 69/70000  
**Dry Protector Primer** 3±2



TIGER Drylac 69/90500  
**Zinc Rich Primer** 70±5

### Legend

- limited UV stability
- ▲ clear coat recommended
- ◆ interior only